

\*欲知更多详情, 请联系我们!  
For more products details, please contact us.



## 公司联络信息

总部: 上海市浦东新区航头镇大麦湾工业园区(201316)  
网址: www.shbst.com  
邮箱: sales@shbst.com

### 上海工厂

地址: 上海市浦东新区航头镇大麦湾工业园区航启路1号(201316)  
电话: +86 21 58224368, 58226900  
传真: +86 21 58223128, 58225564

### 天津工厂

地址: 天津市北辰区北辰科技园宜兴埠工业园区(300400)  
电话: +86 22 58102100  
传真: +86 22 58102100-832

### 国内市场部

电话: +86 21 58224368, 58226900  
传真: +86 21 58223128, 58225564  
邮箱: sales@shbst.com

### 北京办事处

地址: 北京市海淀区文慧园北路金典花园8号楼101室(10088)  
电话: +86 10 62267806  
传真: +86 10 626598

### 嘉善工厂

地址: 浙江省嘉兴市嘉善县姚庄镇福泰路28号(314117)  
电话: +86 0573 84775858  
传真: +86 0573 84775858

### 广东工厂

地址: 佛山市三水区芦苞镇展凌5号(528139)  
电话: +86 0757 8763829  
传真: +86 0757 8763211

### 国际市场部

电话: +86 21 58226513, 58225970  
传真: +86 21 58221353  
邮箱: export@shbst.com

### 沈阳办事处

地址: 沈阳市大东区机校街13号10门(110044)  
电话: +86 24 88128024  
传真: +86 24 28117007

## Contact information

Add: Da-maiwan Industrial Zone, Hangtou, Pudong New Area, Shanghai, 201316 China  
Website: www.shbst.com  
Tel: +86 21 68221520, 68229602  
Fax: +86 21 58221353  
E-mail: export@shbst.com



启动美好生活!

► 了解BST贝思特资讯, 请关注 / Follow me:



扫描二维码  
直接进入BST官网



请关注公众号  
贝思特门机

上海贝思特门机有限公司  
SHANGHAI BST DOOR SYSTEM CO., LTD.

本说明书所列产品设计专利技术; 所刊登的产品图片、制法、可能因技术的进步而有所变更, 使用时请再重询。  
All right reserved. Products listed in this catalogue are with patents.  
Pictures and production products may be changed due to technology improvement, please contact us before using.

2020年8月版



INOVANCE

# COMPANY INTRODUCTION

## 企业简介

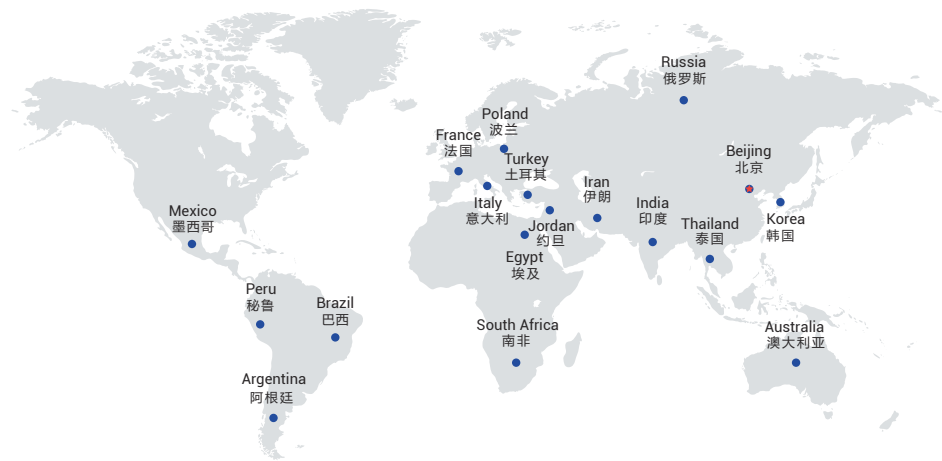


Shanghai BST group is a leading supplier of global elevator products, has been awarded "Shanghai Top 50 private manufacturing industry", "Shanghai Top 100 private enterprises" and "famous trademark in Shanghai" successively. BST keeps the management philosophy of 'Customer-centric, Striver-oriented', with rigorous working attitude and excellent effectiveness, to create value for its customers and make contribution to the society.

Shanghai BST Door System Co., Ltd, specialized in R&D, testing, manufacturing and sale for elevator door system, provide door system products and services in the worldwide. As a high and new technology enterprise, BST door system has various advanced technologies such as intelligent adaptive, closed-loop vector servo control, on-line identification and self calibration, electronic antivandal, etc, in accordance with the latest ROHS standards and the latest international elevator standards, with the CCC and CE certificate.

上海贝思特集团是全球电梯产品的领先配套供应商，先后荣获“上海民营制造业50强”、“上海民营企业百强”、“上海市著名商标”等。贝思特坚持“以客户为中心，以奋斗者为本”的经营理念，以严谨的工作态度及卓越的工作成效，为客户创造价值，为社会做出贡献。

上海贝思特门机有限公司专业从事电梯门系统研发、测试、制造与销售，面向全球提供门系统产品与服务。作为一家高新技术企业，BST门系统具有智能自适应、闭环矢量伺服控制、工况在线辨识及自校准、电子防撞等多种先进技术，符合最新RoHS标准以及国内外电梯最新标准，具有国家CCC认证、欧盟CE认证。



# MARKET&SERVICE

## 市场与服务

**Always** keep customer value oriented and continue to create value for customers.

**始终**以客户的需求为导向，不断为客户创造价值。

**Always** adhere to the management thought of learning, innovation, cooperation and execution.

**始终**坚持“学习、创新、合作、执行”的管理思想。

**Always** adhere to the high-efficiency and high-quality service of elevator door system products, provide pre-sale technical support, order tracking and one-stop after sales service. Adhere to the product innovation and core technology cultivation, to keep as a industry leader and maintain international competitive advantage.

**始终**如一地致力于电梯门系统产品的高效优质服务，为客户提供售前技术支持，售中订单跟踪和售后一站式综合服务。坚持产品的创新与核心技术的培育，保持行业领先与国际竞争优势。

45 person  
人

技术中心人数  
Technical center stuff

70 %

硕士、学士学历人员  
Master, bachelor degree

68 term  
项

拥有国家授权专利及著作权  
Own the national authorized patent  
and copyright

12 term  
项

拥有国家发明专利  
Having a national invention  
patent

# TECHNOLOGY AND R&D 技术与研发

## First-class Technical Team

### 一流的技术团队

Currently, there are 60 engineers in R&D center, in which 75% possess master and bachelor degree. R&D center commits to the innovation and development of elevator door system and cultivation of core technology to keep the leading products and technology. BST has 66 national authorized patents, including 10 patents for invention. BST door systems include standard steel doors, big vision glass doors, full-glass doors, fireproofing doors and cargo elevator doors. BST can also provide customized solution fast and effectively based on our strong technology capability.

技术研发中心现有45人，硕士、学士学历人员占70%。技术研发中心致力于电梯门系统的创新开发与核心技术培育，保持公司产品与技术处于行业领先，具备国际竞争优势。现已拥有国家授权专利68项，其中发明专利12项。

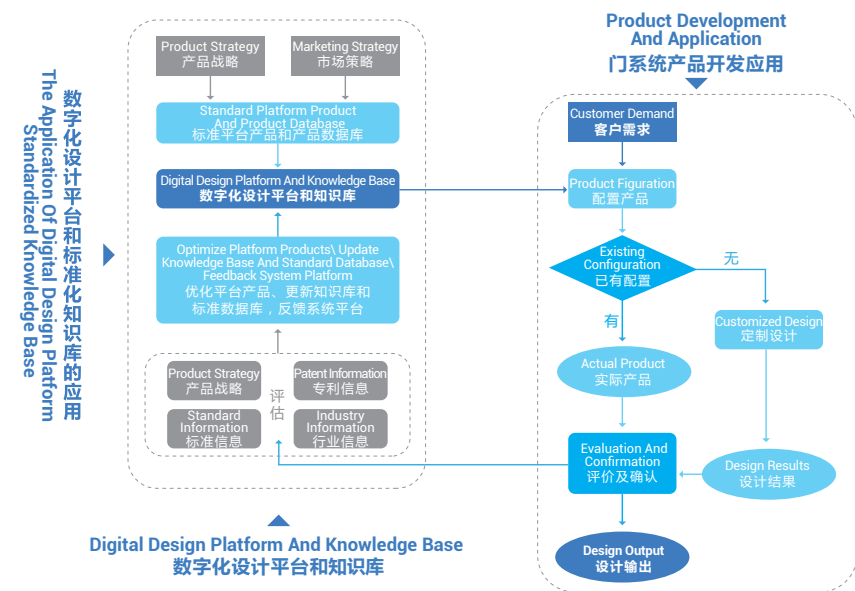
贝斯特拥有标准钢板门系列、大视窗玻璃门系列、全玻璃门系列、防火门系列、货梯门系列，可在此基础上快速高效地为客户提供个性化的非标定制。

## Complete Research And Development Design Platform

### 完善的研发设计平台

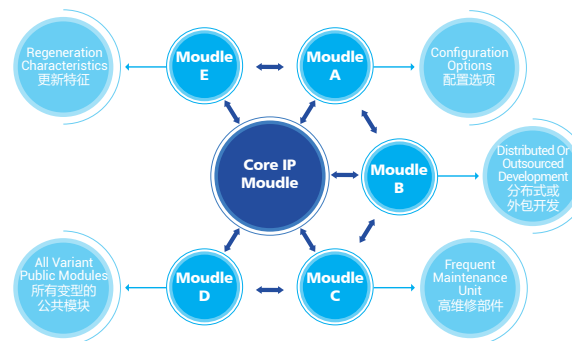
It has established a perfect and complete system of database in standardization and modularization, experimental test, standard information, patent document library and international access. With the help of those database, the 3D digitization, modularization and intelligent design of the products have been realized, and the intelligent optimization and innovation design platform of the door system has been developed, which greatly improved the R&D efficiency.

建立了完善的门系统产品标准化与模块化数据库、实验测试数据库、标准信息库、专利文献库及国际准入数据库。借助贝斯特数据库，开发了门系统智能化创新设计平台，实现了产品的三维数字化、模块化和智能化设计，大幅提升研发效率。



## Modular Product Platform

### 模块化产品平台

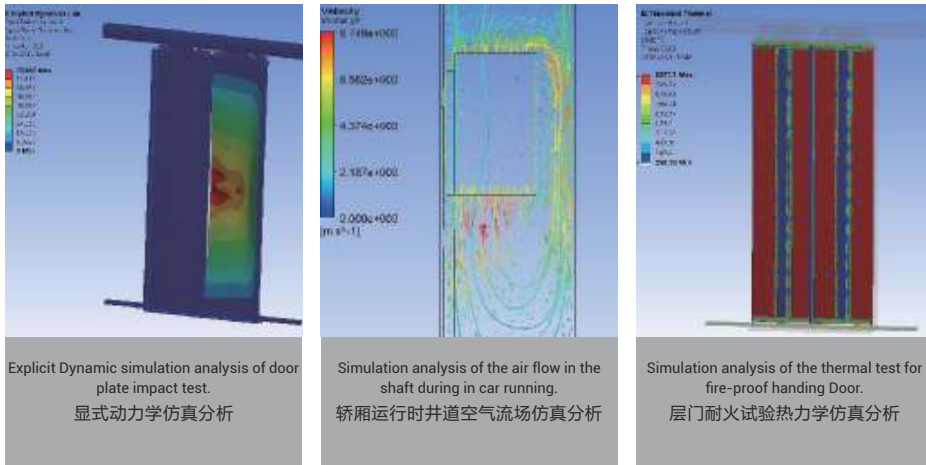


## Advanced Digital Modeling And Simulation Analysis Platform

### 领先的数字仿真分析平台

The technology research and development center has developed the 3D digital modeling and digital simulation analysis platform, to realize the digital simulation analysis of the motion state, dynamic characteristics and mechanism interference of door system products. Lots of experiences has been accumulated in the door system products filed such as shaft flow CFD simulation, fire deformation simulation analysis for fire-proof landing door, collision dynamics simulation, and key parts fatigue failure simulation analysis etc. By combining the simulation analysis with the actual test results, the design scheme is therefore optimized and the design quality is quickly improved.

技术研发中心开发了三维数字化建模和数字仿真分析平台，实现门系统产品运动状态、动力学特征、机构干涉等数字仿真分析。在门系统产品的井道气流CFD仿真、耐火层门受火变形模拟仿真分析、碰撞动力学仿真以及关键零部件疲劳失效仿真分析等方面积累了丰富的经验。通过仿真分析与实际测试结果相结合的方式，优化了设计方案，提升了设计质量。



Explicit Dynamic simulation analysis of door plate impact test.  
显式动力学仿真分析

Simulation analysis of the air flow in the shaft during in car running.  
轿厢运行时井道空气流场仿真分析

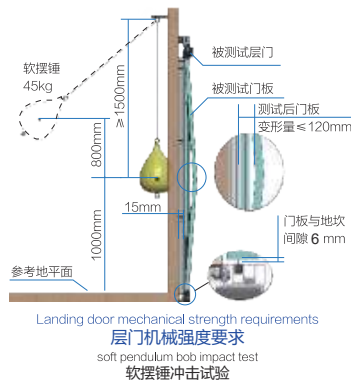
Simulation analysis of the thermal test for fire-proof handing Door.  
层门耐火试验热力学仿真分析

## Complete Test Capability

### 完备的试验测试能力

Shanghai BST has a laboratory with a national CNAS certification and a comprehensive and mechanical tester. With more than 60 international advanced testing equipment, over 90 test items can be carried out, which is fully 100% covered the performance and reliability test of the door system products.

上海贝思特拥有国家CNAS认证的实验室，设有门系统综合实验室和机械测试实验室。拥有60多台国际先进的测试设备，可开展90多项试验检测项目，100%覆盖门系统产品的性能及可靠性测试。



# ELEVATOR DOOR SYSTEM

## 电梯门系统

After many years of technological innovation and development, BST has the elevator door system with inward door skate outward door skate.

经过多年的技术创新研发，BST既拥有内夹式防扒门刀结构的电梯门系统，也拥有外张式防扒门刀结构的电梯门系统。



Outward door skate  
外张式防扒门刀



Inward door skate  
内夹式防扒门刀

**Outward Operator Series:**  
主要适配门机系列：

- J2300
- J2500
- J2511

**Inward Operator Series:**  
主要适配门机系列：

- J4501
- J5801



#### Main Technical Features

- AC permanent magnet synchronous motor, low velocity with large torque and high transmission efficiency.
- Professionally developed door controller with mechanical and electrical integration optimization design, to ensure the optimum closed-loop control of the velocity, position and torque. The operation curve realizes the real-time intelligent adaptive adjustment, it has strong anti-jamming capability.
- Standard integrated door lock with simple structure and high safety.
- Comply with the latest GB7588/XD1, EN81-20 / EN81-50 and ROHS requirements.

#### 产品主要技术特点：

- 采用交流永磁同步电机，低速转矩大，传动效率高。
- 专业开发的门机控制器，机电一体化优化设计，保证了速度、位置、力矩的最优闭环控制，门的运行曲线实时智能自适应调整，抗干扰能力强。
- 标配一体式轿门锁同步门刀，结构简单，安全可靠。
- 产品符合最新GB7588/XD1、EN81-20/EN81-50以及ROHS标准要求。

# Product Index

## 产品索引

### 外张式门系统 Outward Operator Door System

型号/Model	描述/Description	页码/Page	
<b>轻型门系列</b>			
JS02	中分两扇轻型门机	2 Panel Center Opening Lightweight Door Operator	10
T2101	中分两扇轻型层门装置	2 Panel Center Opening Lightweight Landing Mechanism	11

<b>标准型门系列</b>			
J2500	中分两扇标准型门机	2 Panel Center Opening Standard Door Operator	12
J2500	旁开两扇标准型门机	2 Panel Side Opening Standard Door Operator	13
J2500	旁开三扇标准型门机	3 Panel Side Opening Standard Door Operator	14
J2500	中分四扇标准型门机	4 Panel Center Opening Standard Door Operator	15/16
T2200	中分两扇标准型层门装置	2 Panel Center Opening Standard Landing Mechanism	17
T2200	旁开两扇标准型层门装置	2 Panel Side Opening Standard Landing Mechanism	18

<b>重载型门系列</b>			
J2500	中分两扇重载型门机	2 Panel Center Opening Heavyweight Door Operator	19
J2500	旁开两扇重载型门机	2 Panel Side Opening Heavyweight Door Operator	20
J2500	旁开三扇重载型门机	3 Panel Side Opening Heavyweight Door Operator	21
J2300	中分六扇重载型门机	6 Panel Center Opening Heavyweight Door Operator	22
T2200	中分两扇重载型层门装置	2 Panel Center Opening Heavyweight Landing Mechanism	23
T2200	中分两扇重载型层门装置	2 Panel Center Opening Heavyweight Landing Mechanism	24
T2200	旁开三扇重载型层门装置	3 Panel Side Opening Heavyweight Landing Mechanism	25

<b>防火门系列</b>			
T2200	中分两扇防火型层门系统	2 Panel Center Opening Fireproof Landing Door System	26
T2200	旁开两扇防火型层门系统	2 Panel Side Opening Fireproof Landing Door System	27
T2200	旁开三扇防火型层门系统	3 Panel Side Opening Fireproof Landing Door System	28
T2200	中分四扇防火型层门系统	4 Panel Center Opening Fireproof Landing Door System	29
T2200	中分六扇防火型层门系统	6 Panel Center Opening Fireproof Landing Door System	30

<b>视窗门系列</b>			
J2500	中分两扇视窗型轿门系统	2 Panel Center Opening View Glass Car Door System	31
J2500	旁开两扇视窗型轿门系统	2 Panel Side Opening View Glass Car Door System	32
T2200	中分两扇视窗型层门系统	2 Panel Center Opening View Glass Landing Door System	33
T2200	旁开两扇视窗型层门系统	2 Panel Side Opening View Glass Landing Door System	34

<b>高速门系列</b>			
J2500	中分两扇高速梯轿门系统	2 Panel Center Opening High-speed Car Door System	35
T2200	中分两扇高速梯层门系统	2 Panel Center Opening High-speed Landing Door System	36

### 内夹式门系统 Inward Operator Door System

型号/Model	描述/Description	页码/Page	
<b>轻型门系列</b>			
J5801	中分两扇轻型门机	2 Panel Center Opening Lightweight Door Operator	38
JS03	中分两扇轻型门机	2 Panel Center Opening Lightweight Door Operator	39
T3200	中分两扇轻型层门装置	2 Panel Center Opening Lightweight Landing Mechanism	40

<b>标准型门系列</b>			
J4501	中分两扇标准型门机	2 Panel Center Opening Standard Door Operator	41
J4501	旁开两扇标准型门机	2 Panel Side Opening Standard Door Operator	42
T4200	中分两扇标准型层门装置	2 Panel Center Opening Standard Landing Mechanism	43
T4200	旁开两扇标准型层门装置	2 Panel Side Opening Standard Landing Mechanism	44

<b>重载型门系列</b>			
J4501	中分四扇重载型门机	4 Panel Center Opening Heavyweight Door Operator	45
T4200	中分四扇重载型层门装置	4 Panel Center Opening Heavyweight Landing Mechanism	46

<b>防火门系列</b>			
Cozy door	中分两扇防火型层门系统	2 Panel Center Opening Fireproof Landing Door System	47

### 控制器 & 电机 Controller & Motor

型号/Model	描述/Description	页码/Page	
<b>控制器</b>			
BG221	超薄门机控制器	Ultra Thin Door Operator Drive	49
BG301	多功能门机控制器	Multi Function Door Operator Drive	50
NICE900	多用途门机控制器	Multi Application Door Operator Drive	51

<b>电机</b>			
140ST-33	交流永磁同步电机	AC PM Motor	52
125ST-13	交流永磁同步电机	AC PM Motor	52
BPM23E-47	交流永磁同步电机	AC PM Motor	52
140TAST-08	交流永磁同步电机	AC PM Motor	52

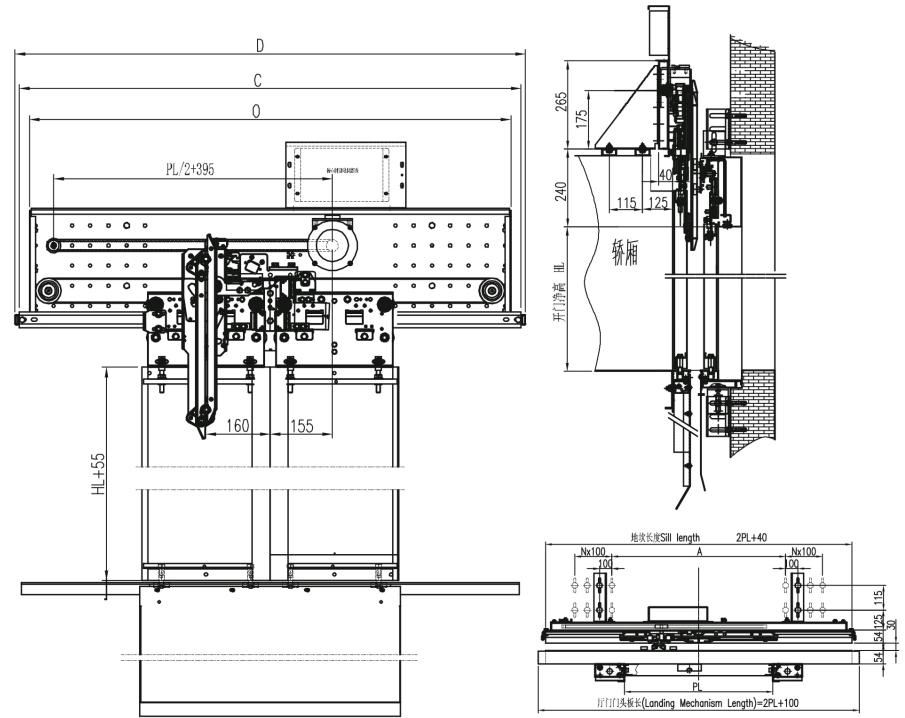
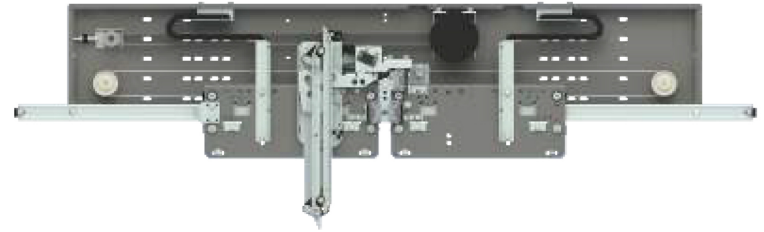


# Outward Operator Door System

## 外张式门系统

### J2500 中分两扇标准型门机

#### 2 Panel Center Opening Standard Door Operator

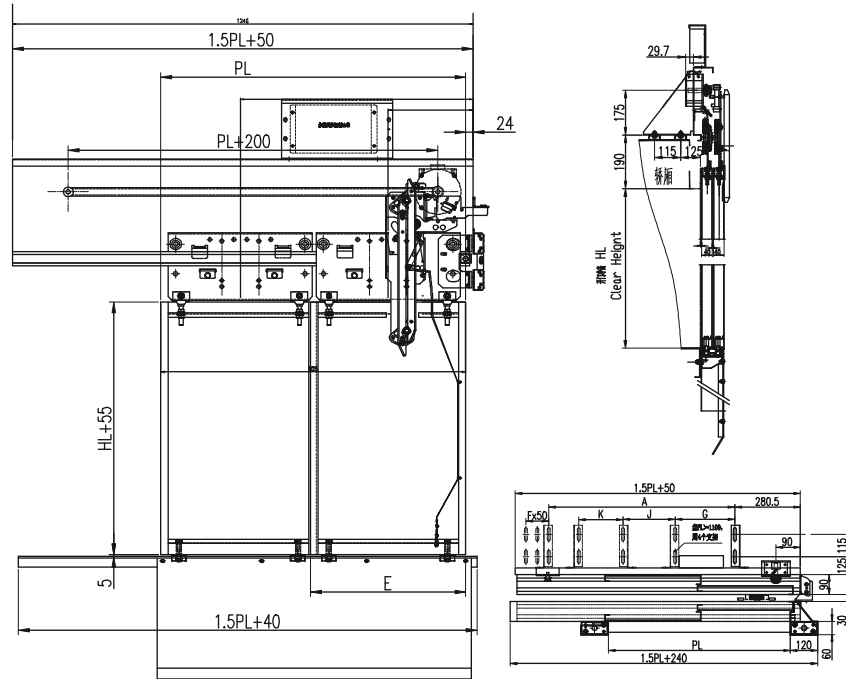
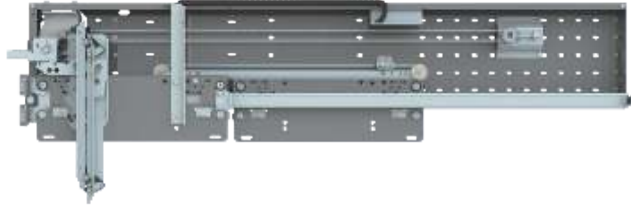


	HL=2000~2500				PL=700~1200			
	标准尺寸 Standard Size							
PL	700	750	800	850	900	1000	1100	1200
C	1450	1550	1650	1750	1850	2050	2250	2450
D	1470	1570	1670	1770	1870	2070	2270	2470
O	1400	1450	1500	1550	1600	1700	1800	1900
E	370	395	420	445	470	520	570	620



## J2500 旁开两扇标准型门机

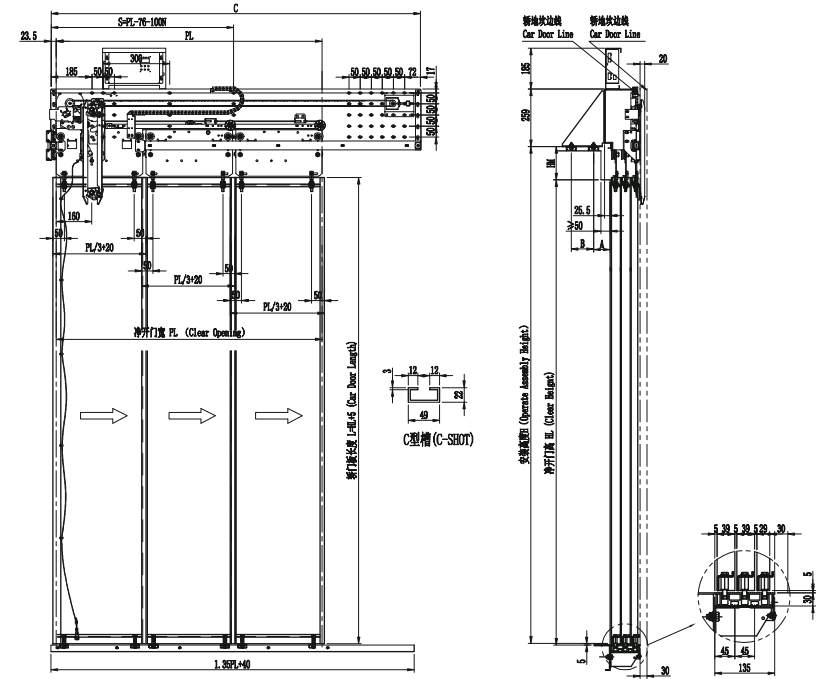
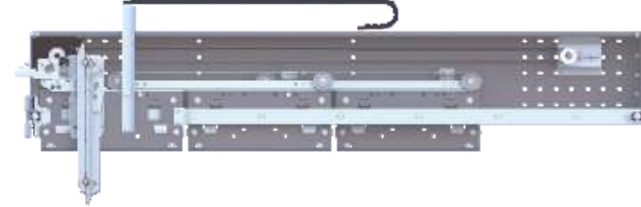
### 2 Panel Side Opening Standard Door Operator



	HL=2000~2500					PL=700~1200	
	标准尺寸 Standard Size						
PL	700	800	900	1000	1100	1200	
A	452	552	702	1102	1202	1302	
G	0	0	0	270	281	326	
J	0	0	0	262	340	400	
K	0	0	0	270	281	326	
F	2	2	1	1	2	3	
E	370	420	470	520	570	620	

## J2500 旁开三扇标准型门机

### 3 Panel Side Opening Standard Door Operator



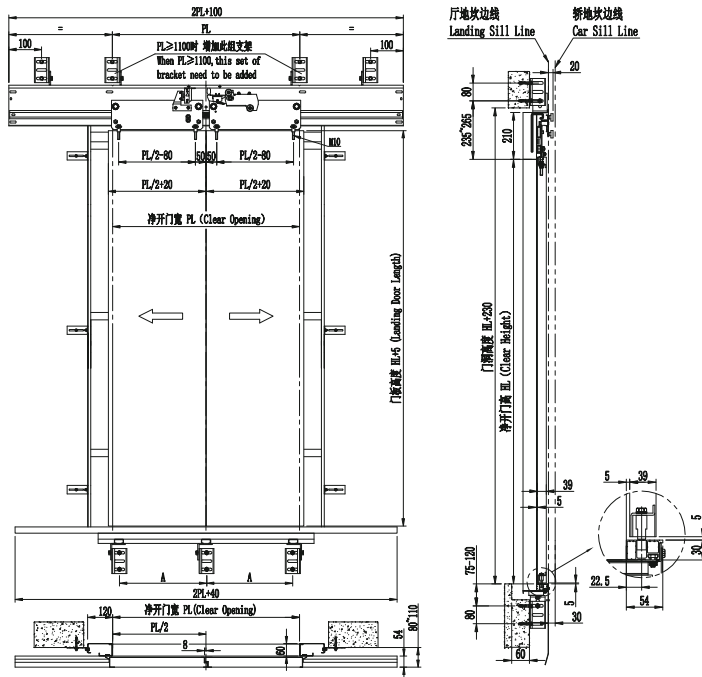
	HL=2000~2500					PL=700~1400		HM=150	A=125	B=115
	标准尺寸 Standard Size									
PL	700	800	900	1000	1100	1200	1300	1400		
C	1125	1225	1325	1432	1537	1667	1802	1937		
S	684	724	724	724	724	824	924	1024		





## T2200 中分两扇标准型层门装置

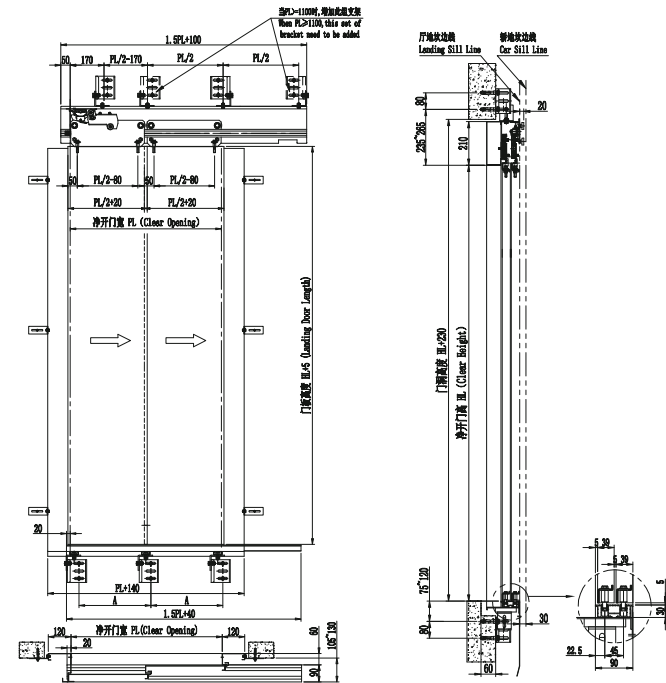
2 Panel Center Opening Standard Landing Mechanism



HL=2000~2200		PL=600~1100				
标准尺寸 Standard Size						
PL	600	700	800	900	1000	1100
A	250	300	350	267	300	333

## T2200 旁开两扇标准型层门装置

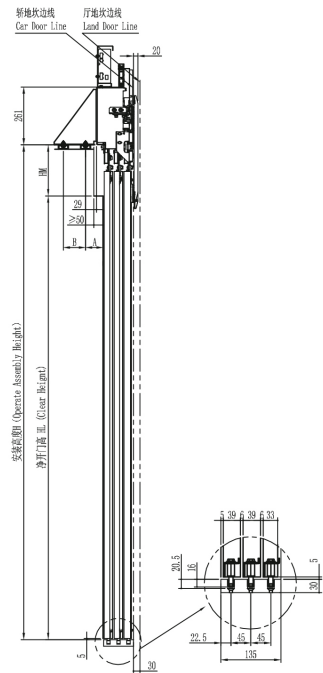
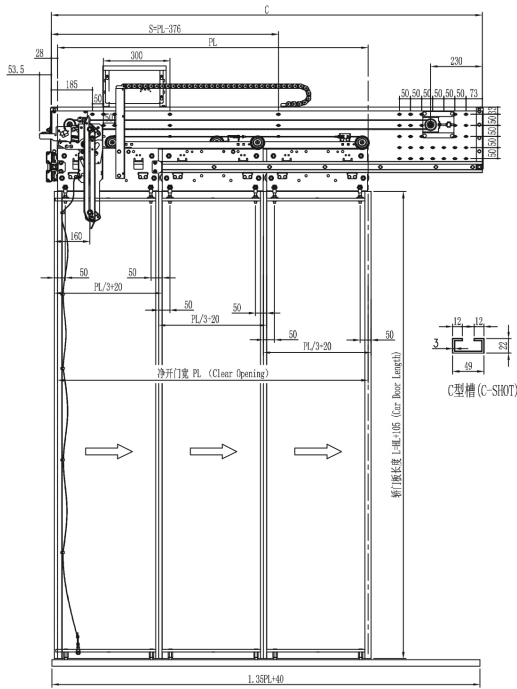
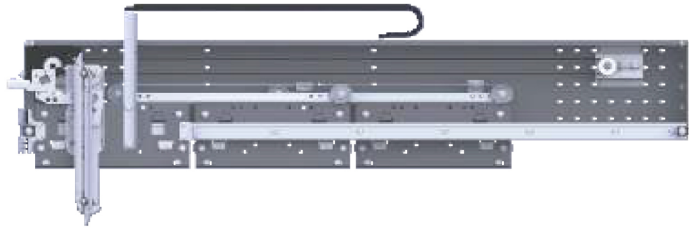
2 Panel Side Opening Standard Landing Mechanism



HL=2000~2200		HL=2000~2500										
标准尺寸 Standard Size												
PL	600	700	750	800	850	900	1000	1100	1200	1300	1400	1500
A	250	300	325	350	375	267	300	333	275	300	325	280

# J2500 旁开三扇重载型门机

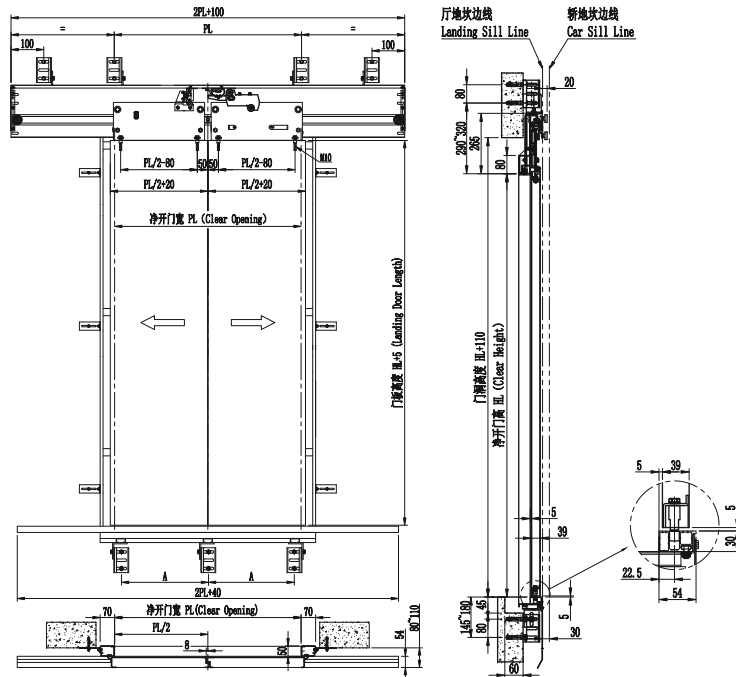
## 3 Panel Side Opening Heavyweight Door Operator



HL=2000~2500	PL=1400~2000						HM=230	A=125	B=115
标准尺寸 Standard Size									
PL	1400	1500	1600	1700	1800	1900	2000		
C	1943	2078	2213	2343	2478	2613	2748		
S	1024	1124	1224	1324	1424	1524	1624		

## T2200 中分两扇重载型层门装置

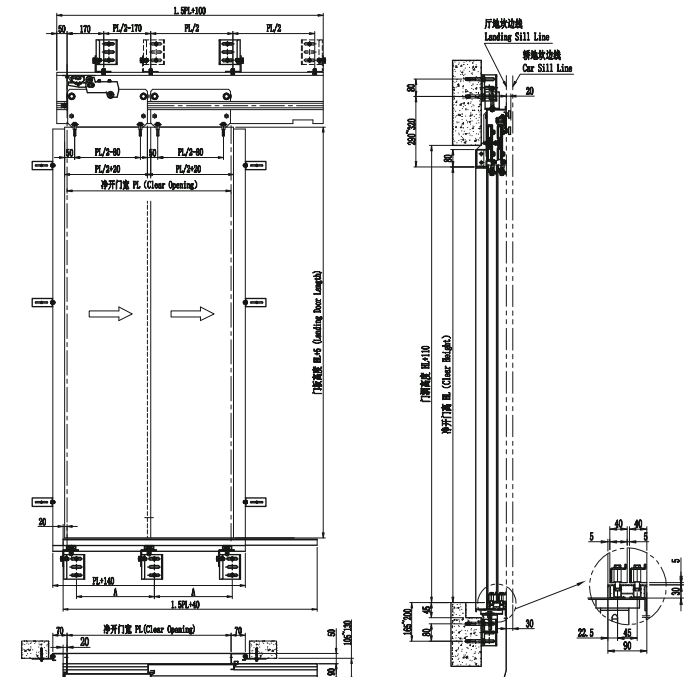
2 Panel Center Opening Heavyweight Landing Mechanism



	HL=2000~2500		PL=1200~1600		
标准尺寸 Standard Size					
PL	1200	1300	1400	1500	1600
A	275	300	325	280	300

## T2200 旁开两扇重载型层门装置

2 Panel Side Opening Heavyweight Landing Mechanism

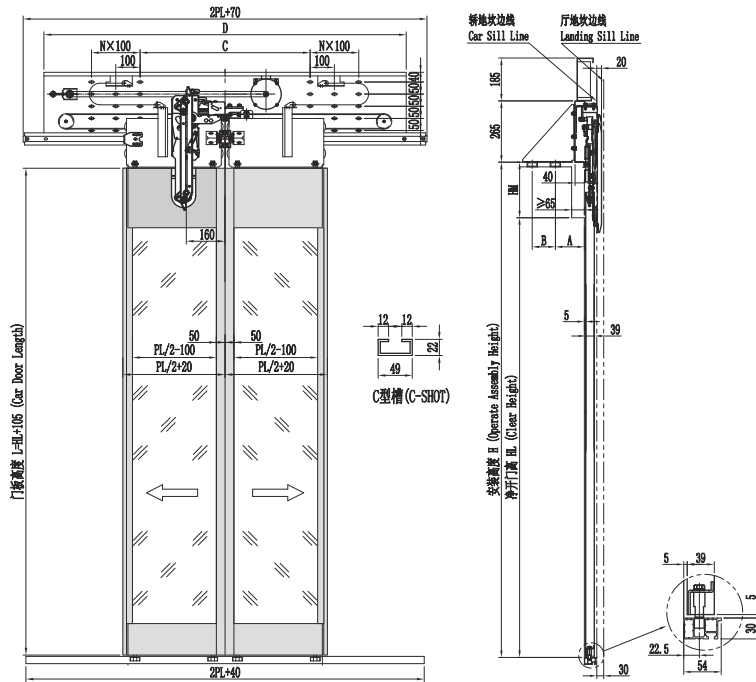
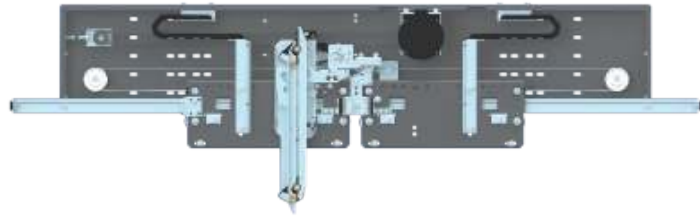


	HL=2000~2500				
标准尺寸 Standard Size					
PL	1400	1500	1600	1700	1800
A	325	280	300	325	350



## J2500 中分两扇视窗型轿门系统

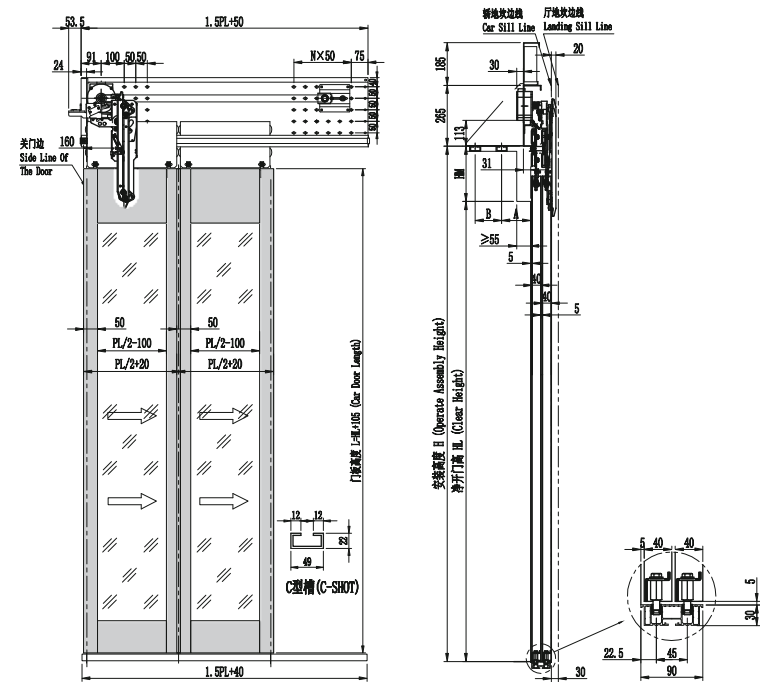
2 Panel Center Opening View Glass Car Door System



HL=2000~2300	PL=700~1200	HM=240	A=125	B=115		
标准尺寸 Standard Size						
PL	700	800	900	1000	1100	1200
C	700	700	800	900	1000	1100
D	1400	1500	1600	1700	1800	1900
N	2	2	2	2	2	2

## J2500 旁开两扇视窗型轿门系统

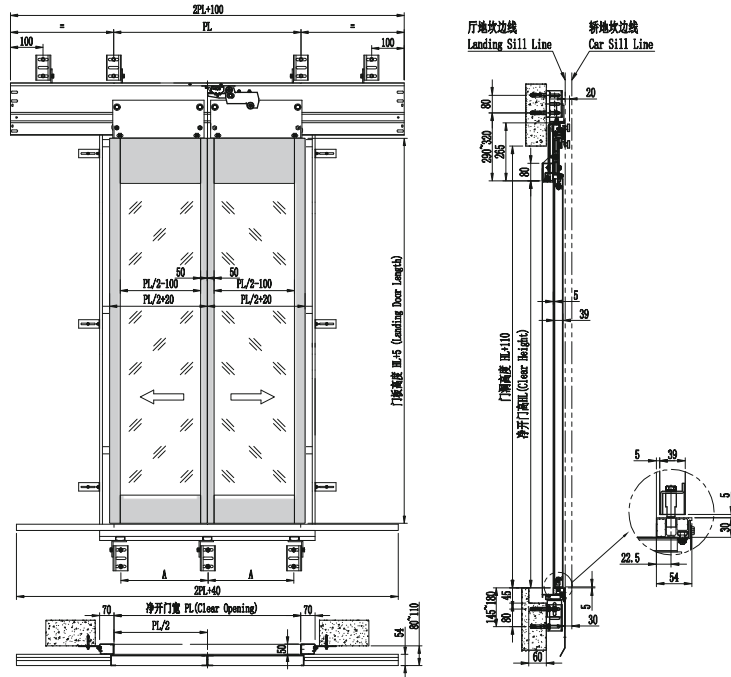
2 Panel Side Opening View Glass Car Door System



HL=2000~2200	PL=700~1200	HM=240	A=125	B=115		
标准尺寸 Standard Size						
PL	700	800	900	1000	1100	1200
N	5	6	6	7	8	8

## T2200 中分两扇视窗型层门系统

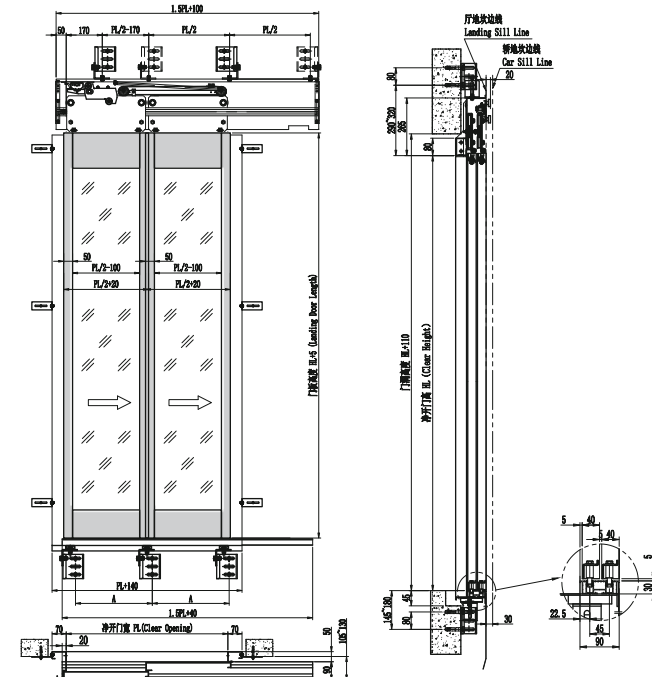
2 Panel Side Opening View Glass Landing Door System



	HL=2000~2300					PL=700~1200	
标准尺寸 Standard Size							
PL	700	800	900	1000	1100	1200	
A	300	350	267	300	333	275	

## T2200 旁开两扇视窗型层门装置

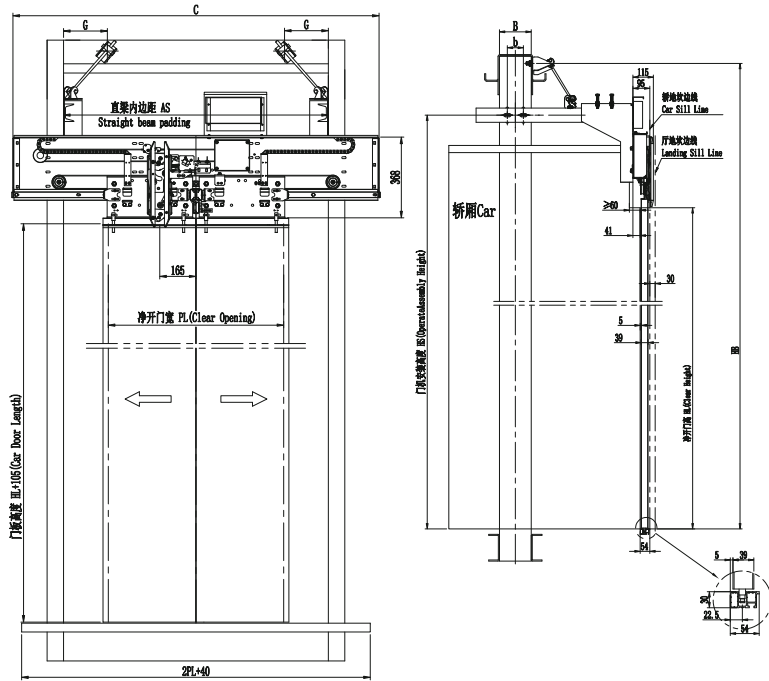
2 Panel Side Opening View Glass Landing Door System



	HL=2000~2300					PL=700~1200	
标准尺寸 Standard Size							
PL	700	800	900	1000	1100	1200	
A	300	350	267	300	333	275	

# J2500 中分两扇高速型轿门系统

2 Panel Center Opening High-speed Car Door System

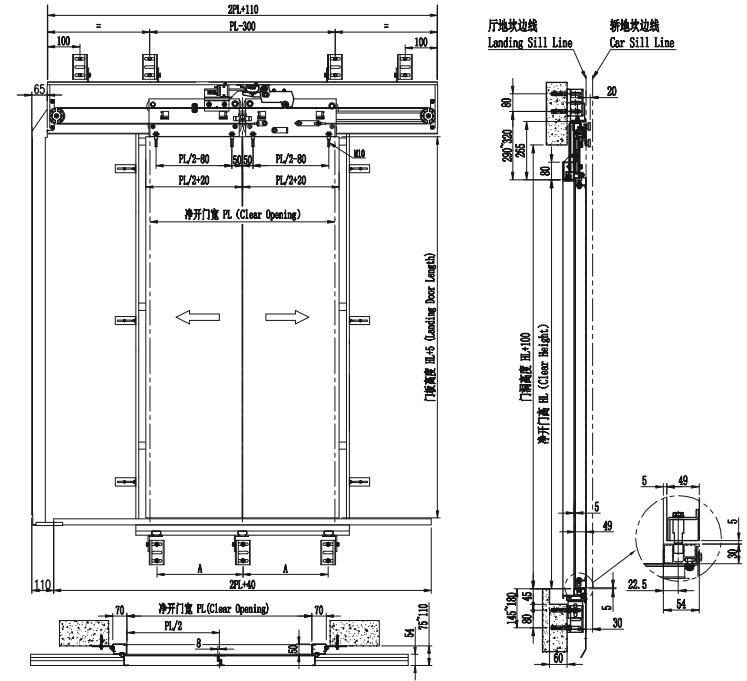


	HL=2000~2500		PL=700~1300			C=2PL+50	
标准尺寸 Standard Size							
PL	700	800	900	1000	1100	1200	1300

# T2200 中分两扇高速型层门系统

2 Panel Center Opening High-speed Landing Door System

E120

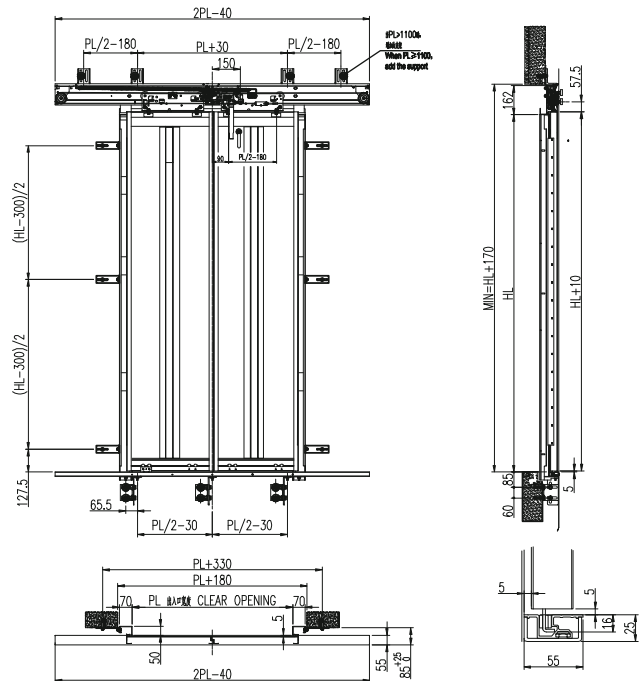


	HL=2000~2500		PL=700~1300				
标准尺寸 Standard Size							
PL	700	800	900	1000	1100	1200	1300
A	300	350	267	300	333	275	300



**Cozy door 中分两扇防火型层门系统**  
 2 Panel Center Opening Fireproof Landing Door System

E120



HL=2000~2400
标准尺寸 Standard Size
PL 700~1200



# DOOR DRIVE AND DOOR MOTOR

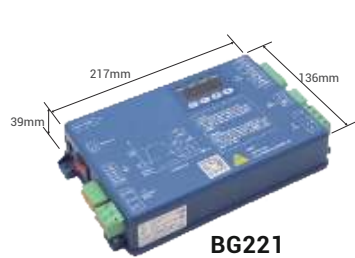
## 控制器与电机

## BG221 超薄门机控制器

### Ultra Thin Door Operator Drive

Bg221 adopts 32-bit ARM processor and intelligent power module, with high-precision vector servo control function. The unique intelligent dynamic optimization generation technology of motion curve and the self-tuning function of door width make the door run more smoothly and reliably.

BG221 采用32位ARM处理器及智能功率模块，具备高精度矢量伺服控制功能。独有的运动曲线智能动态优化生成技术及门宽自校正功能，让门运行更平滑可靠。



- 超薄设计**  
 产品厚度仅39mm，适合超薄门机应用  
**Ultra-thin Design**  
 The thickness is only 39mm, which is suitable for ultra-thin door operator application.
- 安全可靠**  
 具有20多种预警和保护功能，产品更安全  
**Safe And Reliable**  
 with 2 dozens of prewarning and protection functions, making product safer.
- 调试简单**  
 具有一键自学习功能，调试便利，出厂默认即可满足大部分现场工况无需再调试。  
**Simple Debugging**  
 With one button self-learning function, easy debugging, the factory default can meet most of the field conditions, no need to debug.

## BG301 多功能门机控制器

### Multi Function Door Operator Drive

Bg301 has universal DODC interface and can bus interface, supports CANopen bus, can supply power for light curtain, and has the function of power-off hardware brake.

BG301 具有通用DODC接口以及CAN总线接口，支持CANOPEN总线，可为光幕供电，具备断电硬件刹车功能。



- 光幕接口**  
 可供电光幕，门保护快捷  
**Light Curtain Interface**  
 Light curtain port for immediate door protection.
- 安全防护**  
 具备硬件断电刹车功能，防撞保护。  
**Safe And Reliable**  
 With ex-factory default setting suitable for mostly on-site working conditions.
- 调试简单**  
 出厂默认设置即可满足大部分现场工况。  
**Simple Commissioning**  
 Equipped with hardware power-off braking function and anti-collision protection.

主要 技术规格 Main specification	额定功率 Rated power	200W	
	工作电压 Working voltage	单相，220VAC±20%，50/60Hz Single phase, 220VAC±20%，50/60Hz	
	输出电流 Output current	1.7A	
	DODC 模式 DODC Mode	输入信号 Input signal	开门/关门/慢关/保留 Door Open/Door Close/Low-Speed Door Close/Reserved
		输出信号 Output signal	开门到位/关门到位/堵转/故障 Door Open Limit/Door Close Limit/Obstruction/Fault
	CAN bus 模式 CAN bus Mode	输入信号 Input signal	光幕/检修/保留 Light Curtain/Inspection/Reserved
		输出信号 Output signal	CANH/CANL/GND CANH/CANL/GND
	保护告警 Protect	过电压、超速预警、堵转保护、通讯错误、断电防护等保护功能 Overvoltage, Overspeed Warning, Obstruction Warning, Communication Error, etc	
防护等级 IP Grade	IP20		

主要 技术规格 Main specification	额定功率 Rated power	200W	
	工作电压 Working voltage	单相，220VAC±20%，50/60Hz Single phase, 220VAC±20%，50/60Hz	
	输出电流 Output current	1.7A	
	DODC 模式 DODC Mode	输入信号 Input signal	开门/关门/慢关/保留 Door Open/Door Close/Low-Speed Door Close/Reserved
		输出信号 Output signal	开门到位/关门到位/堵转/故障 Door Open Limit/Door Close Limit/Obstruction/Fault
	CAN 模式 CAN Mode	CAN 通讯接口 CAN Interface	具有光幕供电接口,150mA/24VDC 150mA/24VDC for lightCurtain
	保护告警 Protect	过压告警、超速告警、堵转告警、过热告警、断电防撞等 Overvoltage Warning, Overspeed Warning, Obstruction Warning, Overheat Warning, Brake when power off, etc	
	防护等级 IP Grade	IP20	

## NICE900 多用途门机控制器

### Multi Application Door Operater Drive

Nice900 adopts DSP high performance processor and advanced vector servo control technology, which can drive AC asynchronous motor and AC permanent magnet synchronous motor. Through speed control or distance control, it can be widely used in elevator door, cold storage door, subway door, etc.

NICE900 采用DSP高性能处理器以及先进的矢量伺服控制技术，可驱动交流异步电机与交流永磁同步电机，通过速度控制或距离控制，可广泛应用于电梯门、冷库门、地铁门等。



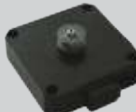



主要 技术规格 Main specification	额定功率 Rated power		200W/400W
	工作电压 Working voltage		单相, 220VAC±10%, 50/60Hz Single phase, 220VAC±10%, 50/60Hz
	输出电流 Output current		1.3A/2.3A
	DODC 模式	输入信号 Input signal	开门/关门/慢关/消防/关门限位 Door Open/Door Close/Low-Speed Door Close/Fire Control/Door Close Limit
	DODC Mode	输出信号 Output signal	开门到位/关门到位/堵转/故障 Door Open Limit/Door Close Limit/Obstruction/Fault
	CAN bus 模式	输入信号 Input signal	CAN通讯可选配 CAN Option
	CAN bus Mode	输出信号 Output signal	
	保护告警 Protect		过电压、欠压警告、堵转告警、相间短路保护、防夹保护等 overvoltage, undervoltage, obstruction, phaseshort protection, anti-pinch protection, etc
防护等级 IP Grade		IP20	

## 交流永磁同步电机

### AC PM Motor

BST special customize low speed high torque AC permanent magnet synchronous motor for elevator door system, energy-efficient, RoHS standard.

贝思特专为电梯门系统定制的低速大扭矩交流永磁同步电机，节能高效，符合RoHS最新标准。

产品 Product	主要特点 Main Feature	额定功率 Rated power	额定电压 Rated Voltage	额定电流 Rated Current	额定转矩 Rated Torque	额定转速 Rated Speed	防护等级 IP Grade	绝缘等级 Insulation Grade
 140ST-33	超薄结构, 安装灵活; 高效节能, 最大负载120kg。 Ultra thin structure, easy installation; energy-efficient, maximum load 120kg.	47	90	0.55	1.8	250	IP44	F
 125ST-13	启动力矩大; 高效节能, 最大负载160kg。 Big start torque, energy-efficient, maximum load 160kg.	47	125	0.45	2.3	195	IP44	F
 BPM23E-47	高防护等级; 高效节能, 最大负载200kg。 High protection level energy-efficient, maximum load 200kg.	47	78	0.57	2.3	195	IP54	F
 140TAST-08	采用外转子结构, 高效率, 最大负载300kg。 Adopt Outer rotor structure, energy-efficient, maximum load 300kg.	86	220	1.00	5	165	IP44	F